



# INSTALLATION GUIDE

## BBCD066 / BBT066-NL

TO SUIT FORD RANGER PX MkIII 07/2018+  
EVEREST UAll 2018+ with Tech Pack



- Ironman 4x4 BBCD066 / BBT066-NL Bull Bars to suit Ford Ranger and Everest PX MkIII 07/2018+ with Tech Pack
- It will take about 4 hours to install

DATE OF ISSUE: 191218

**NOTE: This product has been tested for air bag compatibility and therefore the mounting system MUST NOT BE modified**

**IMPORTANT:** Bull Bar installations should only be done by a qualified person and it's the responsibility of this person to ensure correct fitment.

1. Before installation check bull bar application is compatible with your vehicle.

Before making any cuts, please refer to bumper cutting instructions applicable to your vehicle model (Ford PX Ranger MkIII 07/2018+). Make sure key is removed and off.

2. Remove numberplate holder.

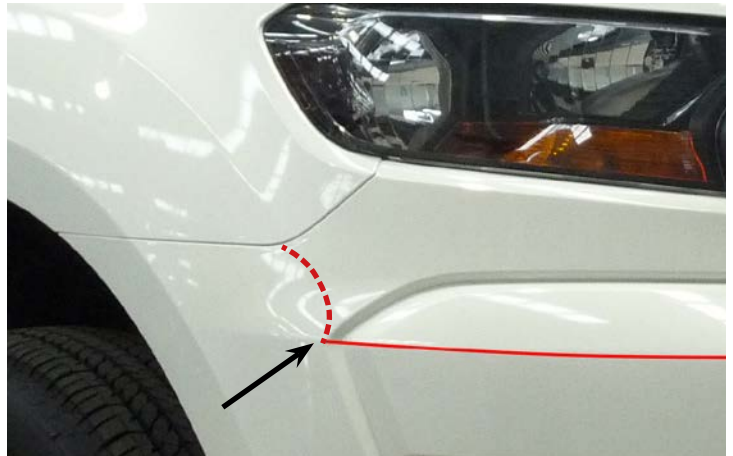
Position cutting template in place under headlight and align with guard edge and grill line.

Use bodyline on bumper as reference to mark cut line on assembly as shown.

Remove grill and bumper bar assembly.

Remove parking sensors from bumper and retain for fitment later.

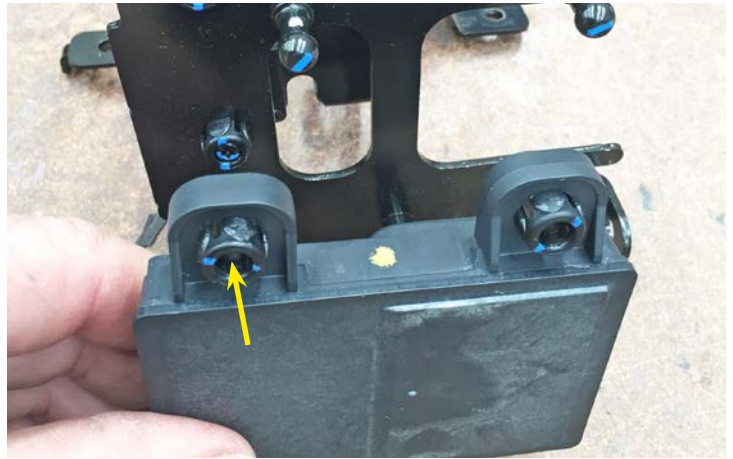
Cut bumper and along marked line. Use an air hacksaw or similar to remove the lower section of the bumper bar



3. Disconnect and remove Adaptive Cruise Control from metal bumper support.



4. Remove sensor from metal backing plate by removing the 3 x plastic isolators and discarding.



5. Temporarily Re-fit top section of bumper bar (cut in previous step) to vehicle.



6. Using end of bumper bar as a guide, mark cut lines onto plastic bumper support brackets.

Remove bumper and plastic bumper support brackets. Cut along marked line as shown.



7. Mask lower edge of guard and paint lower section satin black as shown.



8. Re-fit plastic bumper bar support brackets as shown.



9. Remove air duct shields as shown. Disconnect temperature sensor from passenger side before removing.



10. Mark up cut lines on passenger side of air duct shields following the edges and contours of the shield as shown in image A.



Repeat the process for the drivers side as shown in image B.

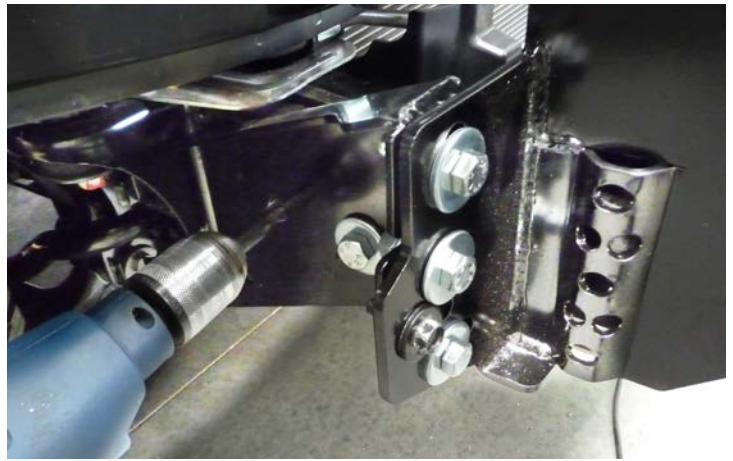
Re-fit modified air duct shields, remembering to re-connect temperature sensor to passenger side.



11. Install chassis bracket as shown using hardware provided.



- 12.** Using chassis bracket as a guide, drill 12.5mm hole each side through chassis and install bolts, flat washers, spring washers and nuts as shown.



- 13.** If winch is being installed, refer to winch installation instructions from page 14.

- 14.** Re-fit bumper bar and grill assembly.

With care, drill a pilot hole into the guard. Then use supplied screw to secure bottom edge of bumper.



- 15.** Unwrap bull bar. Check over riders and light assemblies are tight in bull bar before installation.



# Plastic Parking Sensor Installation

**IMPORTANT:** Parking sensors should be installed as close to the same direction as when they sit in the factory bumper.

- 16.** For new vehicles with parking sensors, the new bars will now come with a plastic parking sensor holder kit. The sensor mounting kit will be inside the bar mounting hardware box.



- 17.** The bars come with a rubber plug in the sensors hole. This plug needs to be pushed out if you need to install the sensors into the bar.



- 18.** Lightly sand the painted surface and then using some cleaner, clean around the sensor hole on the **INSIDE** of the bar.



- 19.** The kit comes with double sided stickers to enable you to stick the sensor holder in place.



- 20.** Remove the middle of the sensor holder to allow the vehicle sensor to go through.





- 21.** Clean the plastic sensor holder and install the double sided sticker.



- 22.** Remove the double sided stickers protective layer and install the sensor holder into the bar.



**IMPORTANT:** Parking sensors should be installed as close to the same direction as when they sit in the factory bumper.



- 23.** Remove bezel from parking sensors. The two outer wing parking sensors will require the extra 'O' ring placed over the silicone sleeve.

Ensure parking sensors are kept in correct order.



- 24.** On either end of the parking sensor loom expose the wires and loosen wires to lengthen. Replace the conduit

**DO NOT CUT ANY WIRES**



- 25.** Install the backing plate to suit the sensor.



**26.** Fit parking sensors as shown.



**27.** Ensure that the sensor is installed correctly and centred.



- 28.** Install Adaptive Cruise Control sensor to bull bar sandwiching the protective cover (supplied) between the sensor and the opening in the face of the bull bar using M8 hardware provided.

**DO NOT OVERTIGHTEN**

Using the M6 hardware provided, install the rear protection plate as shown.



- 29.** Fit bull bar to chassis brackets using M12 bolts, flat washers, spring washers and nuts provided.

- 30.** Align bull bar with vehicle leaving a 15mm gap between bull bar wing and mudguard. Tighten all bolts.



- 31.** Once bar is aligned with vehicle and tightened, drill through pinning holes between bull bar and chassis bracket and secure with bolts, washers and nuts provided.



**32.** Connect parking sensors, Active Cruise Control park lights, indicators and fog lights as per wiring diagram at the back of these fitting instructions

**33.** Disconnect and remove keyless entry antenna from rear of drivers side guard liner base as shown in image A. Trim guard liners using protection plates as a guide.

Align top bolt hole of keyless entry antenna with existing bolt hole in guard liner and reattach with double sided tape higher up on the guard liner.

Re-attach guard liners to protection plates using clips provided, see image B.



**34.** Fit protection plates to underneath of bull bar using M8 bolts, spring washers and flat washers provided.



# Winch Installation

1. Bolt fairlead to recess in front of bull bar using bolts, washers and nuts provided.



2. Fit bull bar to vehicle referring to steps of bull bar fitting instructions.

3. Mount control box in desired location.



4. Connect three colour coded cables to the corresponding poles on winch motor.



5. Connect the thin black earth wire and negative battery cable to the earth connection on the opposite side of winch motor.



6. Run the positive and negative battery cables into the engine bay taking care to secure cables away from any sharp or moving objects.

7. Connect positive and negative battery cables main battery of vehicle (Not Auxilliary Battery).

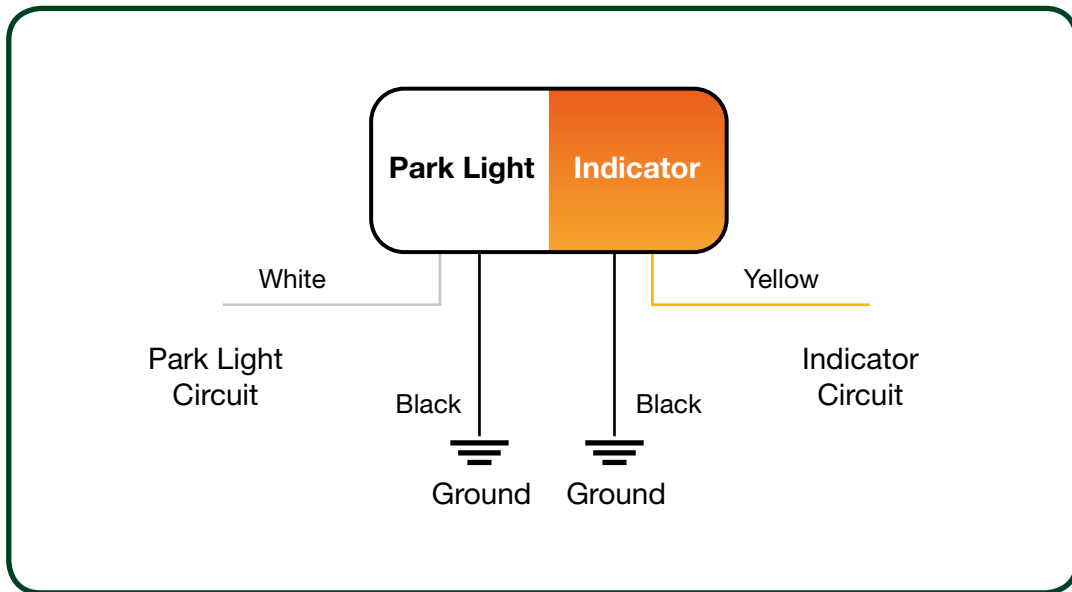
8. Attach breather hose to barb fitting on winch motor. Run hose to the highest available point in engine bay and cable tie in position. Cable tie hose away from any sharp, hot or moving objects.

Refer back to step 18 of the Bull Bar fitting instructions on page 7

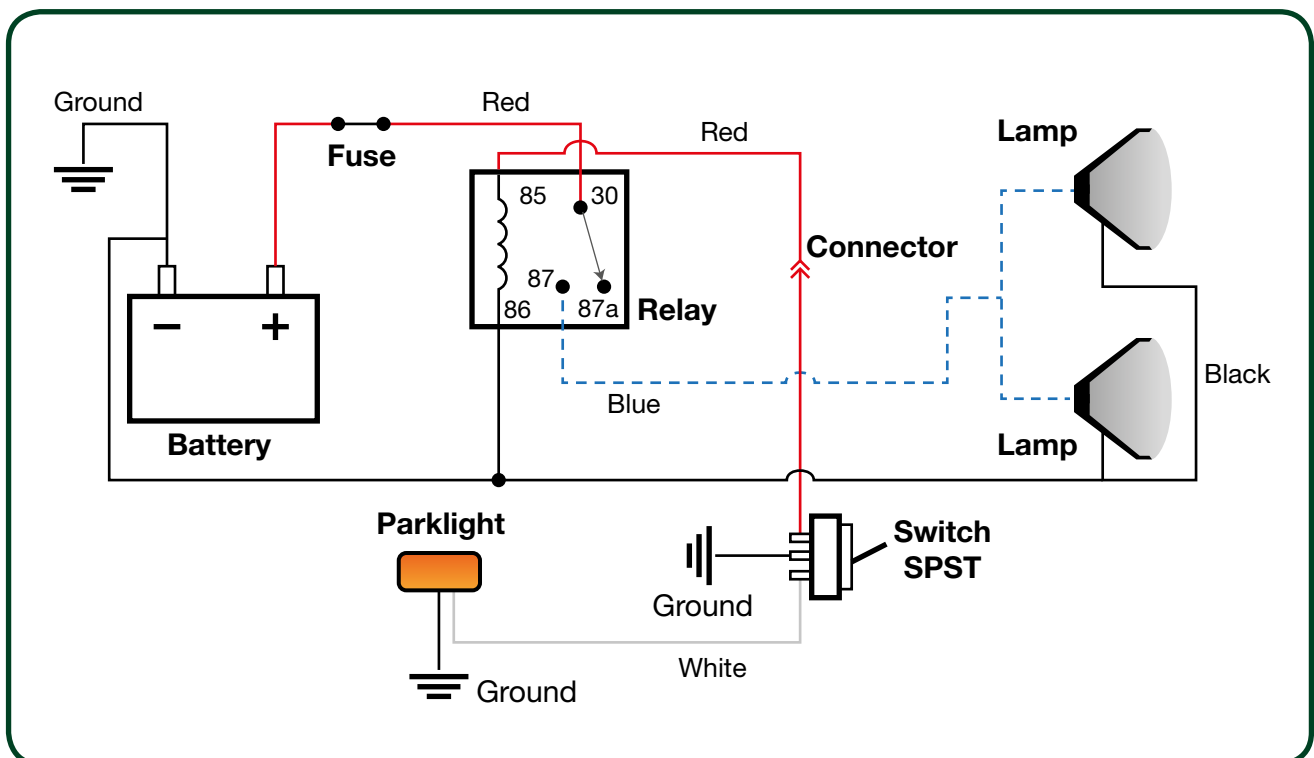


# Wiring Diagrams

## PARK LIGHT & INDICATOR



## FOG LIGHTS





Registration Point



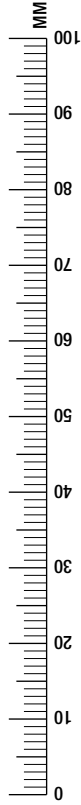
Registration Point

Registration Point



Registration Point

**UNDER HEADLIGHT**



**FORD PX RANGER MK III and UAI EVEREST (Only)  
BBCD066 / BBT066-NL BULL BAR TEMPLATE**

**GUARD**

**CUT LINE**



Registration Point

Registration Point

**UNDER HEADLIGHT**

**GRILL**



Registration Point

Registration Point

**FORD PX RANGER MK III and UAII EVEREST (Only)  
BBCD066 / BBT066-NL BULL BAR TEMPLATE**