



INSTALLATION GUIDE

BBT002/ BBC002/ BBCD002 TO SUIT TOYOTA HILUX 05+



- Ironman 4x4 BBT/ BBC/ BBCD002 Bull Bars to suit a Toyota Hilux 05+
- It will take about 3 hours to install.

NOTE: This product has been tested for air bag compatibility and therefore the mounting system **MUST NOT** be modified

IMPORTANT: Bull Bar installations should only be done by a qualified person and it is the responsibility of this person to ensure correct fitment.

1. Before installation check bull bar application is compatible with your vehicle.

2. Remove grill, front bumper bar, bumper reinforcement and lower bumper support brackets.



3. Remove plastic bumper clips from headlights.



4. Remove plastic deflectors from between headlights and radiator opening.



5. Remove plastic mud guard clips from lower mud guard lips.



6. Mask and paint lower mud guard lips satin black.



7. Trim left hand plastic mud guard liner as shown.



8. Trim right hand plastic mud guard liner as shown.



Note: Secure using a modified original lower bumper support bracket as shown.



9. Attach chassis bracket using hardware provided and tighten all bolts.

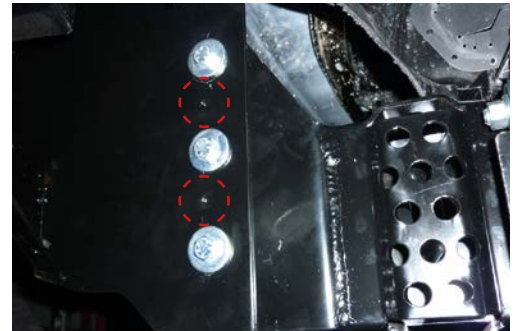


10. If winch is being installed, refer to winch installation instructions Pages 5 - 6.

11. Unwrap bull bar. Check over riders and light assemblies are tight in bull bar before installation.

12. Fit bull bar to chassis brackets using M12 bolts, flat washers, spring washers and nuts provided.

13. Once bull bar is aligned with vehicle and tightened, drill through pinning holes (circled in red) between bull bar and chassis bracket and secure with bolts, washers and nuts provided.



14. Connect park lights, indicators and fog lights as per wiring diagrams on page 7 of Instruction Guide.

15. Attach grill support bracket and refit grill.



16. Fit protection plates underneath the bull bar using M8 bolts, spring washers and flat washers provided.

Winch Installation

1. Bolt winch to cradle with gearbox to the left hand side of vehicle and cable spooling from bottom of the cable drum using bolts and washers provided.



2. Bolt fairlead to recess in front of bull bar using bolts, washers and nuts provided.



3. Fit bull bar to vehicle referring to steps of bull bar fitting instructions.

4. Mount control box in desired location.



5. Connect three colour coded cables to the corresponding poles on winch motor.



6. Connect the thin black earth wire and negative battery cable to the earth connection on the opposite side of winch motor.



7. Run the positive and negative battery cables into the engine bay taking care to secure cables away from any sharp or moving objects.

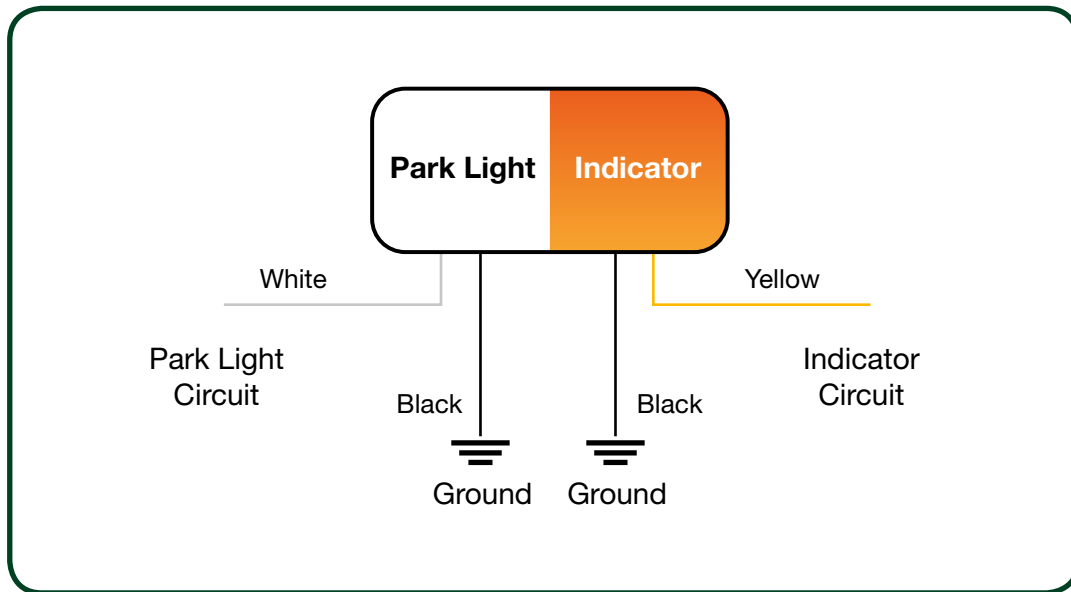
8. Connect positive and negative battery cables main battery of vehicle (Not Auxilliary Battery).

9. Attach breather hose to barb fitting on winch motor. Run hose to the highest available point in engine bay and cable tie in position. Cable tie hose away from any sharp, hot or moving objects.



Wiring Diagrams

PARK LIGHT & INDICATOR



FOG LIGHTS

